



ULTRA VAN MOTOR COACH CLUBS, INC.  
— A NON-PROFIT CORPORATION —

• CLUB NEWS • JULY 1971 • ED. MARTIN •



EDITOR & REPORTER

THIS MONTH'S APHORISM - THE SECRET OF HAPPINESS IS NOT IN DOING WHAT ONE LIKES, BUT IN LIKING WHAT ONE HAS TO DO - SIR JAMES BARRIE.

PREVENTATIVE MAINTENANCE. TODAY NOTHING WORKS AND NOBODY CARES. WE DO CARE. AS OUR EVER-LOVING MACHINES GET OLDER THEY NEED TENDER LOVING CARE. THERE ARE CERTAIN THINGS TO WATCH, TO CHECK AND TO DO -

A FEW REMINDERS: FRONT WHEEL BEARINGS - CLEAN, INSPECT, REPACK.

BRAKES - REMOVE DRUMS, BLOW OUT DUST, INSPECT LININGS, CHECK WHEEL CYLINDERS FOR LEAKS, ADJUST BRAKE MANUALLY. STEERING HOUSING, ARM AND LINKAGE - CHECK FOR PLAY, LUBRICATE. SHOCK ABSORBERS - THOSE FACTORY

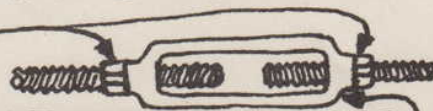
SHOCKS DONT LAST LONG. IF YOUR VAN KEEPS BOUNCING AFTER YOU HIT A DIP, YOU NEED NEW SHOCKS. REPLACE WITH PROPER SIZE MONROE OR GABRIEL DOUBLE ACTING SHOCKS. DONT FORGET TO REPLACE THOSE ROUND RUBBER

BUMPERS AT THE TOP OF EACH SHOCK. UNIVERSAL JOINTS - GOOD IDEA TO GET THESE REPACKED ABOUT NOW. REAR WHEEL BEARINGS - INSTALL

THOSE GREASE FITTINGS. ENGINE MOUNTING BOLTS - CHECK ALL THESE BOLTS. SOME HAVE WORKED LOOSE. TIGHTEN IF NECESSARY. THOSE WHO HAVE THE

TURNBUCKLE-TYPE FRONT UPPER "A" FRAME AND REAR SUSPENSION MEMBERS SHOULD CHECK ALL THE LOCK NUTS.

LOCK NUTS WITH A BIG CRESCENT



GO OVER THE WRENCH AND

BE SURE THAT THEY ARE TIGHT AGAINST THE TURNBUCKLES. LOOSE NUTS AND TURNBUCKLES HAVE CAUSED THE THREADED MEMBERS TO BREAK. DO NOT OVER-LOOK THIS ITEM. OVERHEATING PROBLEMS ON FACTORY V-8 VANS - INSTALL

A BAFFLE BETWEEN TOP OF REAR BUMPER AND TAIL END OF BODY. THIS WILL PREVENT HOT AIR, FROM THE FAN, FROM BEING DRAWN UP AND RECIRCULATED THROUGH THE RADIATOR. EXHAUST EMISSION CONTROL - ALSO KNOWN AS

A.I.R. OR THAT BLASTED SMOG PUMP. THIS PUMP, OR BLOWER, LOCATED AT THE BACK OF THE ENGINE AND DRIVEN BY A SEPARATE BELT IS AN INEFFICIENT AND POWER CONSUMING DEVICE. GOOD NEWS, YOU MAY NOW LEGALLY REMOVE OR DISCONNECT THIS PUMP. CALIFORNIA HIGHWAY PATROL HANDBOOK FOR

INSTALLATION AND INSPECTION STATIONS HPH 82.1, PAGE G-5 READS AS FOLLOWS: 1969 MODEL VEHICLES DESIGNATED BY THE CALIFORNIA AIR RESOURCES BOARD AS NOT BEING REQUIRED TO BE EQUIPPED WITH EXHAUST EMISSION CONTROL SYSTEMS. PARAGRAPH 5 FURTHER STATES THAT THE ABOVE APPLIES TO "MOTOR VEHICLES MANUFACTURED IN QUANTITIES OF LESS THAN 2,000 UNITS FOR ANY GIVEN MODEL YEAR." IF YOU ARE STOPPED AND

THE OFFICER IS NOT FAMILIAR WITH THIS REGULATION, HAVE HIM CALL HIS SUPERIOR. KEEP THIS HPH 82.1 NUMBER IN MIND. WARNING: AFTER YOU DISCONNECT OR REMOVE THE SMOG PUMP YOU ARE NOT OUT OF THE WOODS YET. TRUE, YOU HAVE RELIEVED THE ENGINE OF THAT EXTRA LOAD, HOWEVER, THE SMOG PUMP EQUIPPED ENGINES HAVE A SPECIAL DISTRIBUTOR WITH A DIFFERENT MECHANICAL AND VACUUM ADVANCE CURVE AND A PECULIAR EXHAUST SYSTEM. YOU SHOULD CHANGE THE DISTRIBUTOR AND INSTALL A STANDARD EXHAUST SYSTEM — YOUR REPORTER RECOMMENDS EXHAUST HEADERS AND GLASS PACK MUFFLERS FOR OPTIMUM PERFORMANCE.

NEGATIVE ITEMS FOR POSITIVE SAFETY: ROBBERIES ARE ON THE INCREASE.

CROOKS ARE GETTING MORE DARING. DO NOT LEAVE VALUABLE ITEMS SUCH AS CAMERAS, RADIOS, GUNS ETC IN PLAIN VIEW. CROOKS WORK FAST AND IN BROAD DAYLIGHT. BE CAREFUL. GET A BURGLAR ALARM. A SIGN OF OUR TIMES — LONE TRAVELER BEWARE. KEEP ALERT EVEN WHEN YOU STOP FOR A SNACK ALONGSIDE THE ROAD. FIRE — PHILIP RUSSELL, VAN #250 LOST HIS VAN IN AN UNFORTUNATE FIRE. MR & MRS RUSSELL WERE NOT IN THE VAN WHEN IT BURNED. HERE AGAIN BE CAREFUL. CHECK AND DOUBLE CHECK EVERYTHING. INSURANCE — CHECK YOUR INSURANCE COVERAGE.

INSURANCE COMPANIES LOVE YOU AS LONG AS YOU PAY-PAY-PAY, BUT WHEN YOU SUFFER A LOSS, HAVE AN ACCIDENT OR A FIRE, WATCH OUT — IT'S ANOTHER STORY — THAT'S WHEN THE FINE PRINT AND LEGAL DOUBLE TALK COMES IN. THAT NICE MAN WHO SOLD YOU THAT POLICY AND PROMISED YOU THE MOON ON A SILVER PLATTER IS NOT THE SAME ONE WHO ADJUSTS YOUR CLAIM. YOUR REPORTER APOLOGIZES TO GOOD INSURANCE COMPANIES.

PHOTOGRAPHS FOR CLUB ALBUM — ALL MEMBERS ARE REQUESTED TO SEND ANY SPARE SNAPSHOTS OF OUR RALLIES, POTLUCKS, MEETINGS, ETC TO EDNA NEWHOUSE, VAN #228. A BIRTHDAY — OUR BELOVED

MR. R. LEE HEATH, WHO FORMERLY OWNED VAN #223, CELEBRATED HIS 90<sup>TH</sup> BIRTHDAY LAST MONTH. JUST RENEWED HIS DRIVER'S LICENSE. HOW ABOUT THAT! OUR LOVE AND BEST WISHES TO CHARTER MEMBERS, MR AND MRS R. LEE HEATH.

ITEMS FOR SALE: RICHARD C. ADAMS, VAN #443 HAS FOUR DUNLOP 8 PLY RATING 7:35 x 14 TIRES & SOME OF THE ORIGINAL HUB CAPS FOR SALE. CONTACT HIM IF YOU NEED ANY OF THESE ITEMS. YOUR ULTRA VAN IS NOT A MACK TRUCK. DON'T LOAD IT DOWN WITH EVERYTHING, INCLUDING THE PROVERBIAL KITCHEN SINK. LOOK OVER THOSE WHAT-NOTS, DING-DONGS, THING-A-MA-JINGS, STUFF AND JUNK YOU HAVE SQUEEZED INTO EVERY NOOK AND CRANNY. WHEN YOUR REPORTER FIRST GOT HIS VAN, EVERYTHING WENT INTO IT. EXTRA CLOTHES, SHOES, LINEN, BOOKS, TOOLS, SPARE PARTS, CASES OF OIL, GUNS AND ENOUGH AMMUNITION TO START A REVOLUTION. AFTER FOUR YEARS OF LUGGING THIS CONTRABAND AROUND FOR THOUSANDS OF MILES,

MERRILY PINGING ALONG THE WAY AND USING UP HUNDREDS OF GALLONS OF GASOLINE, A DECISION WAS MADE TO TAKE A LOOK AT SOME OF THESE ARTIFACTS THIS PACK RAT HAD SO CAREFULLY STOWED AWAY. COCKROACHES AND SPIDERS HAD ESTABLISHED SQUATTER'S RIGHTS AND THESE HAD TO BE LIBERATED". THE RESULT WAS THAT A PILE OF MOLDY ITEMS WERE REMOVED - TOTAL WEIGHT ALMOST 300 LBS. OLD NUMBER 296 SURE HEAVED A SIGH OF RELIEF.

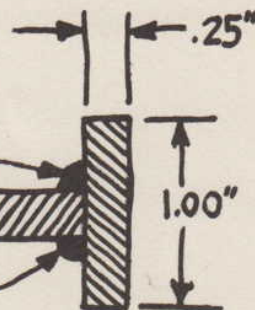
TRAVEL NOTES. PRESIDENT AND MRS RYERSON #513 ARE UP IN CANADA ENJOYING A WELL EARNED VACATION. WE EXPECT TO SEE THEM AT THE OCTOBER RALLY AT BERMUDA PALMS, ON THE COLORADO RIVER. VICE PRESIDENT AND MRS FOSTER #518 ARE ON AN EXTENDED TOUR OF THE NORTH WEST. THE MILLERS #374 AND THE LONGS #338 LEFT FOR ALASKA LAST MONTH. WE LOOK FORWARD TO THEIR RETURN FOR AN ACCOUNT OF THEIR TRIP. SHOULD BE INTERESTING. THE ADAMS #443, BLEW AN ENGINE DEEP IN THE HEART OF TEXAS AND HAD TO BE TOWED 130 MILES. WOW! BILL & SHIRLEY LEWIS #379 OUR DISTANT MEMBERS FROM BUCKHANNON, WEST VIRGINIA HAVE WRITTEN TO SAY THAT THEY ARE ENJOYING THEIR ULTRA VAN AND HOPE TO ATTEND OUR BERMUDA PALMS RALLY IN OCTOBER. NEW MEMBERS - A WARM WELCOME TO BILL KUHN #387, ERIE, PA., CHESTER & JANET HART #389 OF OAK PARK, ILLINOIS, CHESTER & HARRIET HOFFMAN #519, GEORGE & MAXINE TRUMAN #497 AND GENE & ELSIE WILSON #525. OUR CLUB IS GROWING! NOW HEAR THIS - DAVE PETERSON IS SCHEDULED TO APPEAR AT OUR COARSE GOLD RALLY WITH TOM CHRONES VAN #221 IN WHICH A SIDE MOUNTED ENGINE HAS BEEN INSTALLED ALONG WITH OTHER RADICAL BODY CHANGES. THIS, YOU MUST NOT MISS. THOSE OF YOU WHO HAVE BEEN TURNED DOWN AT A LOT OF GARAGES WILL BE GLAD TO HEAR THAT GARY BOWMAN OF CORVAIR CITY WILL WELCOME YOU WITH OPEN ARMS. TO DATE, HE HAS WORKED ON 20 ULTRA VANS - ALL SATISFIED CUSTOMERS. UNLESS YOU HAVE YOUR OWN FAVORITE MECHANIC, IT IS WORTH A TRIP TO SEE GARY. HE IS AN EXPERT IN REMOVING THAT SMOG PUMP, INSTALLING EXHAUST SYSTEMS AND DOING GENERAL ENGINE TUNE-UP. GARY HAS INSTALLED A 4 SPEED MANUAL TRANSMISSION IN KIMBALL'S VAN #431. WE EXPECT TO HAVE THIS VAN, WHICH HAS BEEN NEWLY PAINTED, EQUIPPED WITH MAG WHEELS AND WIDE TIRES, ON DISPLAY AT THE COARSE GOLD RALLY. THIS YOU MUST SEE. JOIN C.O.R.L. THE CALIFORNIA OUTDOOR RECREATION LEAGUE. THEY ARE DOING A GREAT JOB AND NEED YOUR HELP, ENCOURAGEMENT AND THANKS. DICK BAKER #401 IS VERY ACTIVE IN THIS MOVEMENT. YOUR \$2.00 SENT TO 4264 E. FLORENCE AVE, BELL, CA. 90201 WILL KEEP YOU POSTED ON ADVERSE LEGISLATION ETC. PLEASE DON'T SKIP THIS ONE. GARY BOWMAN CAN BE REACHED AT 1350 W. 260TH ST. HARBOR CITY, CA 90710. PHONE (213) 326-9589. PLEASE EXCUSE MY ERRORS - IF ANY - AND DO SEND COMMENTS - SINCERELY,

YOUR REPORTER, EDWARD MARTIN #296

NOTE: FAILURES OCCURED  
HERE ON ATTACHING PLATE  
WITHOUT THE REINFORCEMENT

ADDED  
REINFORCEMENT

WELDS



SECTION A-A  
FULL SIZE  
SHOWING REINFORCEMENT  
WELDED TO ATTACHING PLATE

NOTE 1. THE ATTACHING PLATE BOLTS TO THE UPPER BALL JOINT. MAKE SURE THAT THESE BOLTS ARE ALWAYS TIGHT.

NOTE 2. CHECK YOUR VEHICLE. IT MAY ALREADY HAVE THIS FIX. IF NOT, ANY GOOD WELDING SHOP CAN FIT THE REINFORCEMENT AND WELD IT WITHOUT REMOVING THE A FRAME.

ATTACHING  
PLATE

TURNBUCKLE  
ASSEMBLIES

NOTE. OLDER VEHICLES DO NOT HAVE THE TURNBUCKLES.

NOTE: THIS REINFORCEMENT SHOULD BE  
ADDED, AND PROPERLY WELDED AS SHOWN,  
TO PRECLUDE FAILURE OF THE ATTACHING PLATE

FRONT TURNBUCKLE ASSY FIX  
2 REQ'D PER VEHICLE  
DRAWN BY: ED. MARTIN  
DATE: 20 JULY 1971