

A QUALITY MOTORHOME DESIGNED AND BUILT TO ENDURE

The *TIARA* motorhome offers you the opportunity to discover America while living at home. It will take you anywhere you want to go in style and comfort . . . ready to wander at the touch of a finger.



The *TIARA* features the popular Oldsmobile Toronado engine and power train with front wheel drive. This powerful 375 HP engine combined with sleek lines of the all-aluminum *TIARA* provides you with unequalled handling characteristics. Compare the effortless and smooth drive you get with that of a luxury automobile.

The *TIARA*'s comfortable interior is highlighted by the handcrafted cabinet work. The all-formica interior will greet you with rich, warm tones that lasts for years . . . and so easy to maintain. Pride of workmanship is evident everywhere you look.

Your *TIARA* motorhome will be a constant source of personal pride and enjoyment for years to come . . . ask any *TIARA* owner.

BELCO, INC.

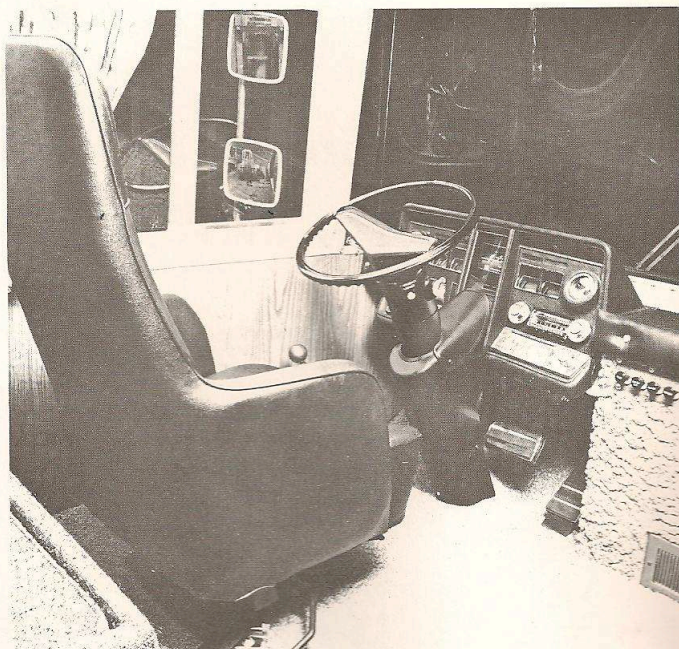
P.O. BOX 116

HUTCHINSON, KANSAS 67501

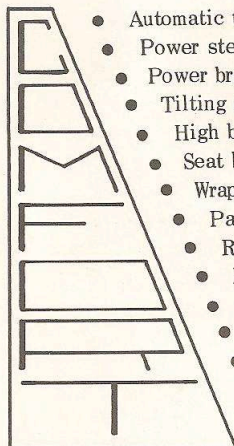
PHONE A/C 316-663-1187 OR 662-0289

DRIVABILITY *swift and safe*

The quality of the *TIARA* begins right here in the driver's seat. You are driving an automobile, not a truck. It is designed and engineered with the driver in mind. The power and acceleration delivered upon your command from the Olds Toronado engine is astonishing! What a feeling of confidence in heavy traffic or during high-way passing. The *TIARA* will cruise all day at turnpike speeds.



STANDARD DRIVER COMFORT & SAFETY FEATURES



- Automatic transmission
- Power steering
- Power brakes – dual system
- Tilting steering wheel
- High back contour seats – adjustable
- Seat belts
- Wrap-around windshield
- Panagraphic electric wipers
- Roll bar
- Heater, defrost and fresh air system
- Sun visor
- Full instrument panel – vinyl padded dash
- Electric clock
- Motor minder for economy driving
- Lighter and ashtray
- Fully carpeted

PLUS OPTIONS

- AM-FM pushbutton radio (2 speakers)
- Stereo tape player – 8 channel
- Air conditioners – roof and/or automotive
- 110 Volt generator – 4KW
- Cruise control

MECHANICAL AND AUTOMOTIVE

- 375 HP Olds Toronado engine – 455 cu. in. V-8
- Front suspension – heavy duty torsion bars
- Rear suspension – heavy duty leaf springs
- Brakes – front disc and rear expanding
- Heavy duty cooling system
- Transmission cooler
- 10 – 16.5 Duplex tires
- Undercoated
- 40 gallon gasoline tank

PERFORMANCE

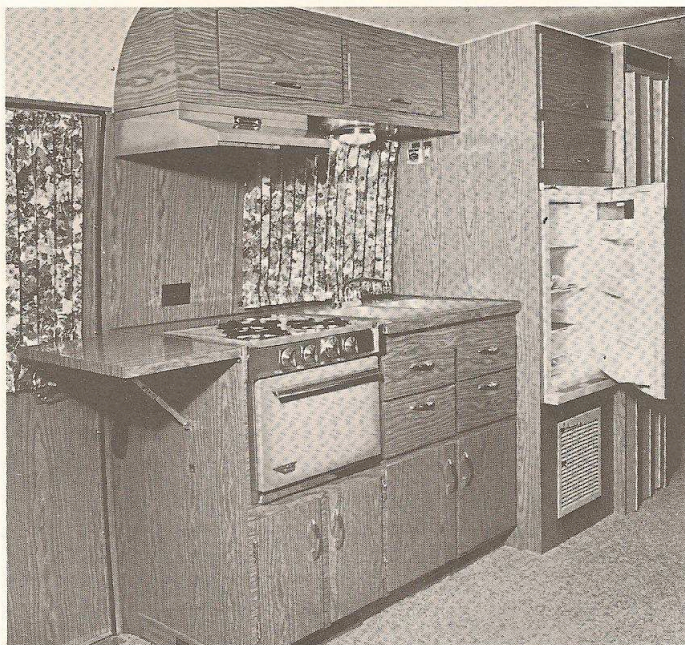


SAFETY



POWER

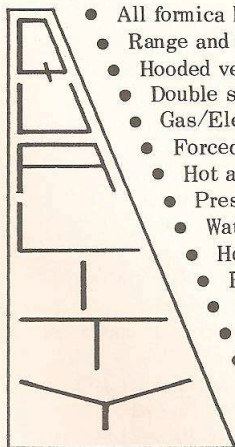
LIVABILITY with lasting beauty



Beautiful formica paneling, wall-to-wall carpeting, and color coordinated fabrics and drapes provide a superb setting for the quality furniture and appliances you will find in the *TIARA* motorhome.

The *TIARA*'s kitchen has all of the conveniences that today's women have come to expect. Notice the storage and drawer space, all within the normal reaching range.

STANDARD KITCHEN CONVENIENCES



- All formica handcrafted cabinet work
- Range and oven — thermostat controls
- Hooded ventilator and light
- Double stainless steel sink with covers
- Gas/Electric refrigerator — 4.5 cu. ft.
- Forced air heat — ducted and controlled
- Hot and cold water
- Pressurized water system (50 gal. supply)
- Water tank gauge
- Hot water tank — 6 gallons
- Fold down work table
- Over sink light
- Window by sink
- 110 volt outlets
- Storage — lock in place drawers (4)
 - overhead cabinets (4) with friction hinges
 - cabinet doors (4)

PLUS OPTIONS

- Water purifier
- Four burner range
- Larger refrigerator

**PRIDE
OF
WORKMANSHIP**

QUALITY is spelled with capital letters in our factory. Each unit is continually inspected during production . . . then thoroughly road-tested prior to delivery. We take great pride in our workmanship and the quality that we build into the *TIARA*.

DURABILITY



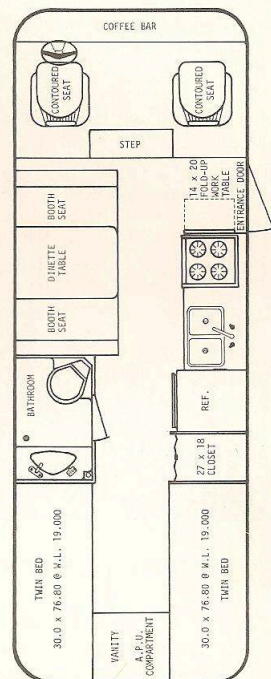
LUXURY



STYLE

TWO FLOOR PLANS

✓ PLAN A • DINETTE



DINE & SLEEP

The table can be lowered on its hinge converting the dining area into a bed. Place the four cushions side by side and make a 72" x 42" bed. It is a simple operation to place the cushions back on the seats and raise the table, now you have a dining area for four.

There is abundant storage below the seats — over 15 cubic feet. It is an ideal place to store bulky items such as golf clubs, sleeping bags, etc.

The table can be completely detached and the dinette seats moved about. Such versatility lets you rearrange this area for specific needs.

LIVING AREA FEATURES

- Matched interior decor
- Picture window
- Overhead cabinets
- High intensity swivel lights
- Wall to wall carpeting
- Reversible cushions to match drapes
- Storage under cushions — 15 cu. ft.
- Detachable table — easily stored
- Bed by night 42 x 72
- Movable dinette seats
- 110 volt outlets

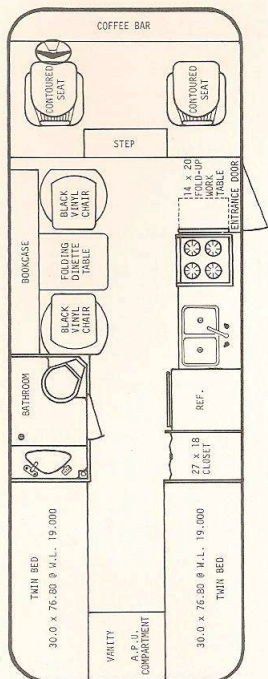
CHOOSE YOUR INTERIOR COLORS

- Paneling: Mellow cherry, dark or white walnut
- Carpet: Gold, green, blue-green
- Drapes: Green or blue floral pattern
- Upholstery: Gold, green, blue

choose the one that fits your needs.



PLAN B • BOOKCASE & TABLE



LIVING AREA FEATURES

- Matched interior decor
- Picture window
- Overhead cabinets
- High intensity swivel lights
- Soft vinyl chairs
- Storage cabinets with shelves
- Fold down table
- Wall to wall carpeting
- Pull drapes
- 110 volt outlets
- Ideal for couple

CUSTOMIZE YOUR MOTORHOME

- Some variations can be custom ordered in the bedroom and living room areas. There are some economical and physical limitations. Discuss your individual tastes with us.

DINE & LOUNGE

The drop-leaf table in the up position provides you with a dining table. Enjoy your dining while sitting in comfortable soft vinyl chairs.

After the meal, fold the table down and spend a relaxing evening of conversation or TV. The contoured driver and passenger seats swivel to face the rear. Now you have four plush chairs in your living area.

Many couples find this floor plan ideal. Furniture arrangements can be made easily and quickly to meet the occasion.

CONVENIENCE + COMFORT

BATHROOM

The large bathroom complete with sanitary facilities and hot and cold running water makes your motorhome totally self contained. There is a round lavatory in a vanity setting. The hot and cold mixing faucet has the diverter valve on top, which can direct the water to the telephone-type shower head. Flow of water is controlled by a thumb button.

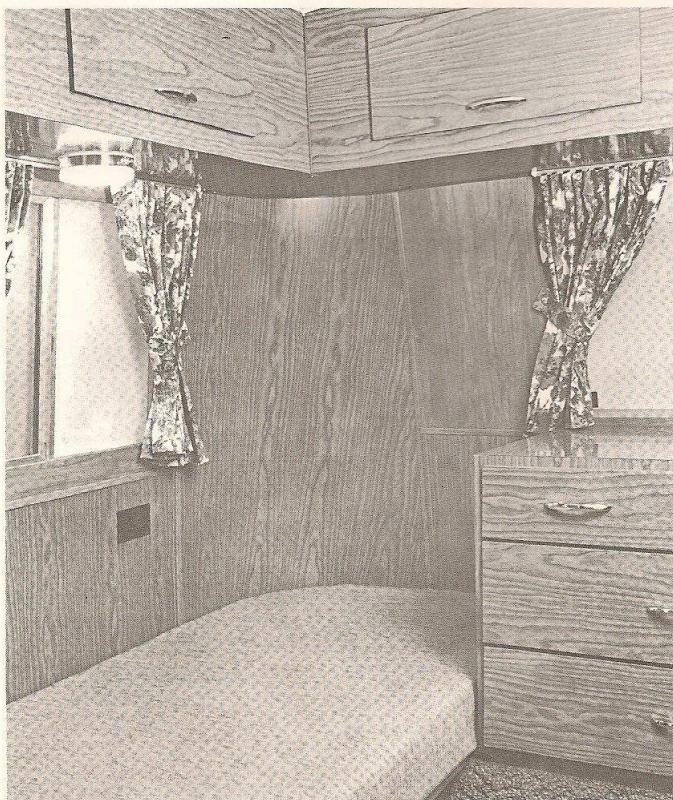
- Marine type toilet flushed into 50 gal. tank
- Stainless steel round sink
 - Medicine chest with mirror
 - Shower
 - Cabinet storage in vanity
 - Pressurized water system
 - Shower curtain
 - Towel bars (chrome)
 - Power vent with lumadome
 - Formica walls (white with gold fleck)
 - Tissue protected from shower

DUAL EMPTYING SYSTEM

Emptying the holding tank can be a white-glove job. The powerful 12-volt $\frac{1}{4}$ H.P. LIM-IN-ATOR pump with maserator empties the 50 gallon tank in less than 8 minutes thru a $\frac{3}{4}$ " hose. If desired, the tank also can be emptied by using the customary drop drain arrangement of 3" flex hose and knife valve.

BEDROOM

Twin beds with firm mattresses provide you with a restful sleep. A night stand between the beds has four deep drawers for convenient storage. Each bed has its own light for reading. Mattress covers matching the decor of the room transforms this area into a comfortable living space during the day. It is a favorite spot for extra passengers.



- Twin beds — 75" x 30"
- Firm mattresses
- Individual reading lights
- Rear window is emergency exit
- Sliding windows with screens
- Drapes with tie backs
- Vanity — 4 deep drawers
 - Closet — wooden folding doors
 - Overhead cabinets
 - Cabinets lined with foam
 - Storage under beds
 - Light in closet
 - 110 volt outlets

OPTIONS

- Larger twin beds 75" x 36"
- Double bed

GENERAL SPECIFICATIONS

EXTERIOR . . . lustrous

- Hard and durable finish
- Chrome bumpers
- Spare tire with cover
- Rear view mirrors
- Entrance door 28" wide
- Tinted safety glass throughout
- Screened windows
- Patio light

The outside finish is easy to clean. The walnut and gold stripe add to the graceful lines of the *TIARA*. Its appearance is admired by all who see it.

INTERIOR . . . color coordinated

- Vinyl covered aluminum ceiling
- Formica wall panels and cabinets
- Wall to wall carpeting
- Drapes at all windows for privacy
- Friction hinges on all cabinets
- Polyfoam lining on cabinet bottoms
- Padded vinyl dash

The interior is designed to be compact yet provide you with spacious living. Rich color tones creates an atmosphere of true luxury.

HEATING . . . controlled environment

- Forced air 23,000 BTU furnace
- Thermostatically controlled
- Dual 20 lb LP gas tanks – vented
- Air conditioning – 12,000 BTU (opt)
- All windows will open – screened
- Polyurethane foam insulation
- Ventilators

No matter what the weather may be outside, you will find the *TIARA* comfortable and cozy inside. Only quality appliances are used to assure reliability.

PLUMBING . . . meets rigid codes

- 50 Gallon holding tank
- Dual holding tank emptying system
- 50 Gallon fresh water supply
- City water hookup
- Hot water heater and tank (6 gal)
- Pressurized water system 12 volt
- Copper lines
- Marine flush type toilet

Modern conveniences make travel and camping pleasurable. A dependable plumbing system makes it more so.

ELECTRICAL . . . protected circuits

- 12 Volt DC system
- 110 Volt AC system
- Shore line
- Battery charger
- Exterior lighting meets Federal codes
- Backup lights and emergency flasher
- Patio outlet
- Power generator (opt) with 45 amp battery
- Dual 90 amp batteries

Electricity is necessary in today's modern living. The *TIARA*'s well engineered electrical system provides you with this commodity trouble free. Voltage from 110 volt shoreline and generator is automatically converted to 12 volt for lights and appliances . . . no bulb changing or switching.

POWER AND DIMENSION SPECIFICATIONS

- 455 cu. in (375 HP) Olds Toronado Engine
- Olds front wheel drive train and suspension
- Wheel base: 193"
- Length: 23'
- Height: outside - 8'6" inside - 6'5"
- Width: 7' 10"
- Turning radius: 25'
- Curb Weight: 6700 lb.
- Tires: 10 x 16.5 Duplex
- Tinted safety glass

The *TIARA* has an all-aluminum body and frame. Actually it is all one in the same, that is, in technical terms—unitized construction. The body is built similar to an airplane fuselage. This gives it great strength and permits air to flow freely around it. In simple words, the *TIARA* is streamlined.

For the mechanically minded, compare the curb weight to horsepower ratio with that of other motorhomes. You can easily see why the *TIARA* has economical performance, power to spare, and handling characteristics comparable to a luxury automobile.

Review the basic shell structure: All-aluminum outer skin, sprayed-on polyurethane foam insulation, and formica and vinyl-clad aluminum interior. All this adds up to a corrosion resistant, fire retardant, long lasting, easy to maintain motorhome.

Such a durable shell structure must be complimented with workmanship of equal quality. We, at BELCO, have combined years of aircraft experience with six years of motorhome manufacturing experience to produce the *TIARA*. Truly, a quality motorhome designed and built to endure.



BELCO, INC.

P.O. BOX 116 PHONE A/C 316-663-1187 OR 662-0289
HUTCHINSON AIR BASE INDUSTRIAL TRACT

HUTCHINSON, KANSAS 67501

The information given in all literature is correct up to time of publication. The company does not produce yearly models as such. Changes and improvements are made from time to time, and the company reserves the right to change colors, prices, equipment, specifications or discontinue models without notice. No obligation or liability is assumed to equip units previously sold with new or improved features.