

## COLOR COMBINATIONS

Carpet and Upholstery	Blue	Paneling	White Walnut
	Gold		Dark Walnut
	Green		Mellow Cherry

## STANDARD EQUIPMENT

Power Brakes	H.D. Torsion Bar
Power Steering	Trans. Oil Cooler
Front Wheel Disc Brakes	Tilt Steering Wheel
375 H.P. Olds Toronado Engine	Tinted Windshield
Tires 8.90x15—Whitewall	Automotive Type Heater
Double Sink	Numerous Storage Cabinets
Breadboard	Many Drawers
Dual 20 lb. L.P. Tanks	Wall to wall carpet
Fire extinguisher	Drapes at all windows for privacy
Safety belts	Melamine plastic wall paneling
Dual batteries	Vinyl coated ceiling
Battery charger	23,000 BTU Forced Air Furnace
50 gallon fresh water system	Safety glass throughout—tinted
Electric water pump	Urethane Spray Insulation
Drain system with 50 gallon holding tank	110 volt hookup—25' shore line
Water heater—six gallon	Two rear view mirrors
Comb. Gas-Elec. Refrigerator	Electric windshield wipers
40 Gal. Gasoline Tank	Windshield washers
3-burner range—thermostat, oven and broiler	Clearance lights
Spare tire with wheel	Turn signals
Jack and lug wrench	Back-up lights
Hooded Ventilator	Bucket Seats

## OPTIONAL EQUIPMENT

Cruise Control	Stereo tape player	Air conditioning
110-Volt Generator	AM/FM radio	

Completely approved as a Multi-Purpose Vehicle under Federal Safety Standards

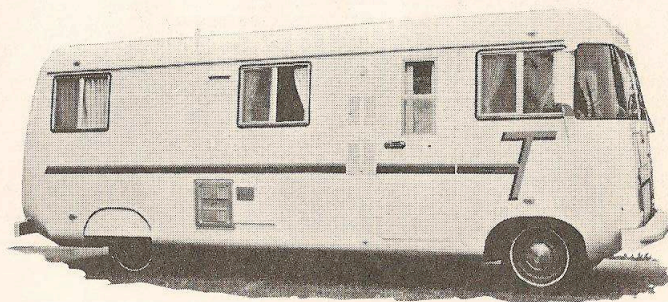
Write for Complete Colorful Motor Home Library It's FREE!



Division of ULTRA, INC.  
5th & Washington Streets  
Hutchinson, Ks. 67501  
Phone/Area Code 316/662-0289

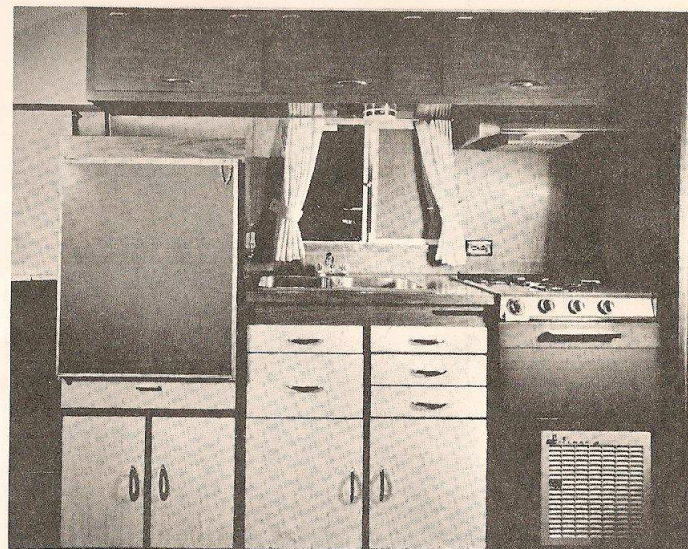
T25

The information given in all literature is correct up to time of publication. The company does not produce yearly models as such. Changes and improvements are made from time to time, and the company reserves the right to change colors, prices, equipment, specifications or discontinue models without notice. No obligation or liability is assumed to equip units previously sold with new or improved features.



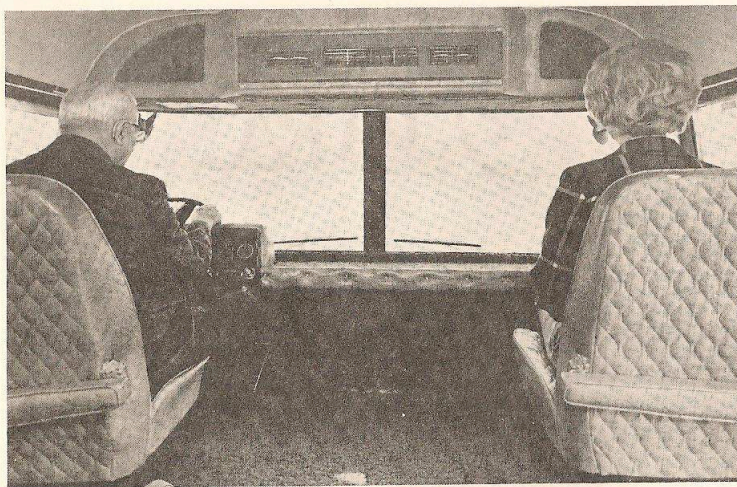
## THE CROWNING BEAUTY OF THE MOTOR HOME INDUSTRY

Completely self-contained and self-propelled; including cooking, sleeping and sanitary facilities. Your home away from home.

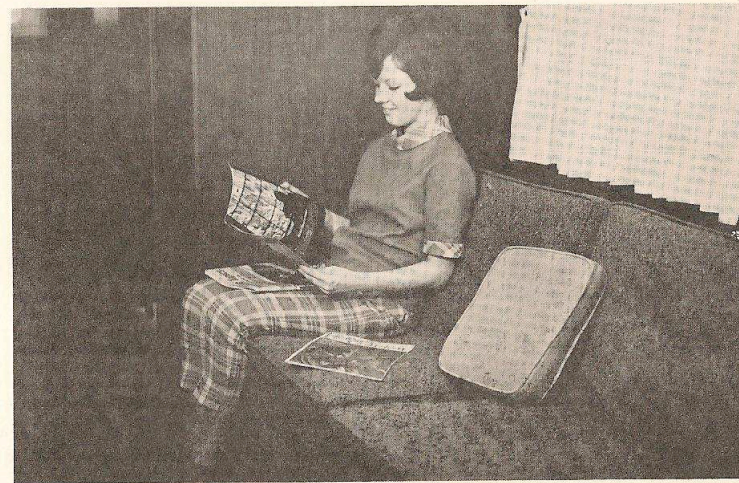


78" Galley With Eye-Level Refrigerator and Double Sink





Quilted Vinyl Bucket Seats and NO Hump in the Middle



Comfortable Lounge By Day—Bed By Night

